

21.05.2020

Evolution

21st May 2020

LO: To be able to identify how plants are adapted to suit their environment in different ways and that adaption may lead to evolution.



Watch these amazing short video clips:

Teaching Resource: Plant adaptations

<https://www.youtube.com/watch?v=C1Ib0-BIBKU>

Tree and plant life in the jungle - David Attenborough - BBC wildlife

<https://www.youtube.com/watch?v=H9MV5CgPglQ>

How have different animals adapted to their habitats?

<https://www.bbc.co.uk/bitesize/clips/zbp6n39>

Animal adaptations

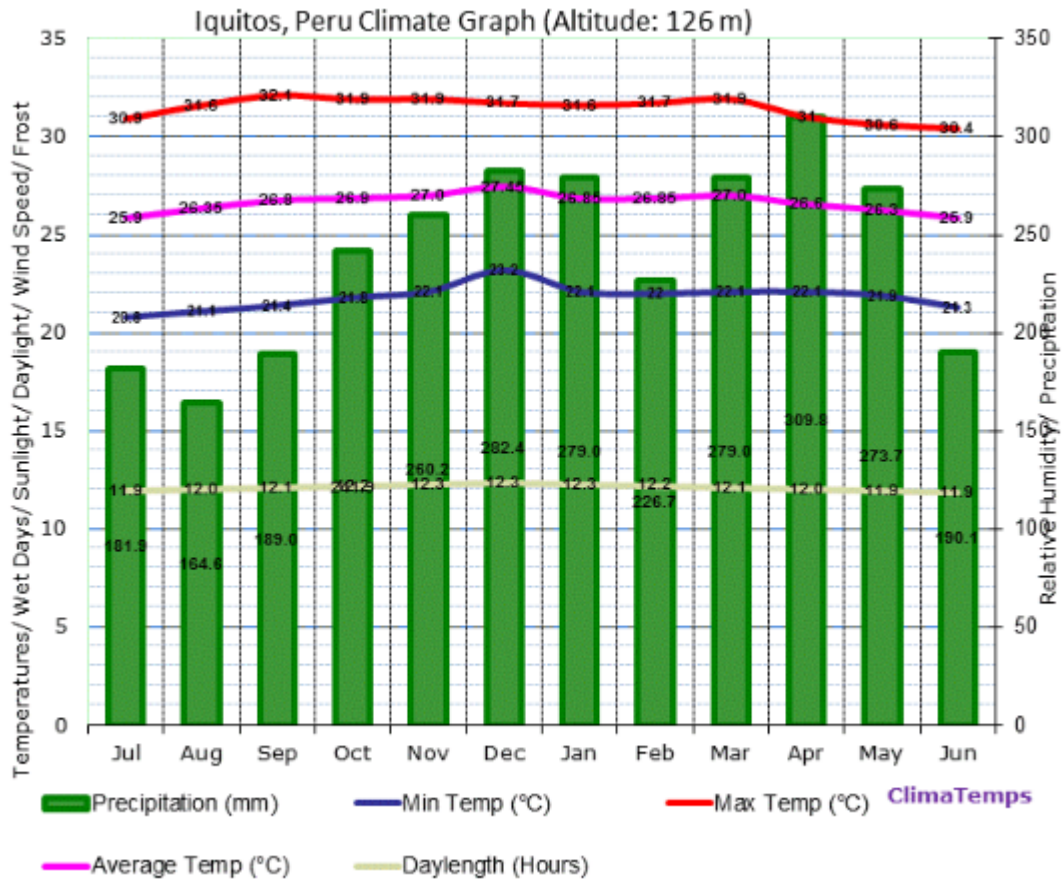
https://www.youtube.com/watch?time_continue=95&v=fRX2JtKFUzk&feature=emb_logo

Graph information



21.05.2020

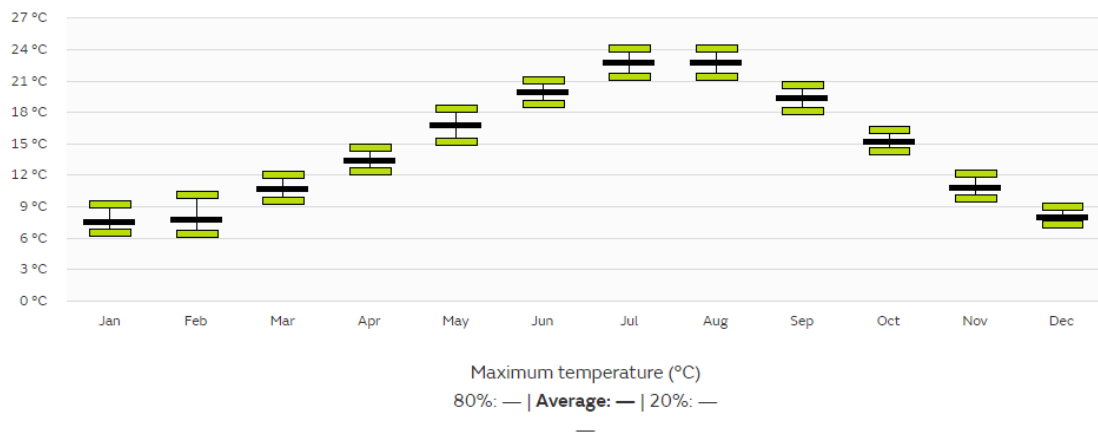
Evolution



Station: Faversham

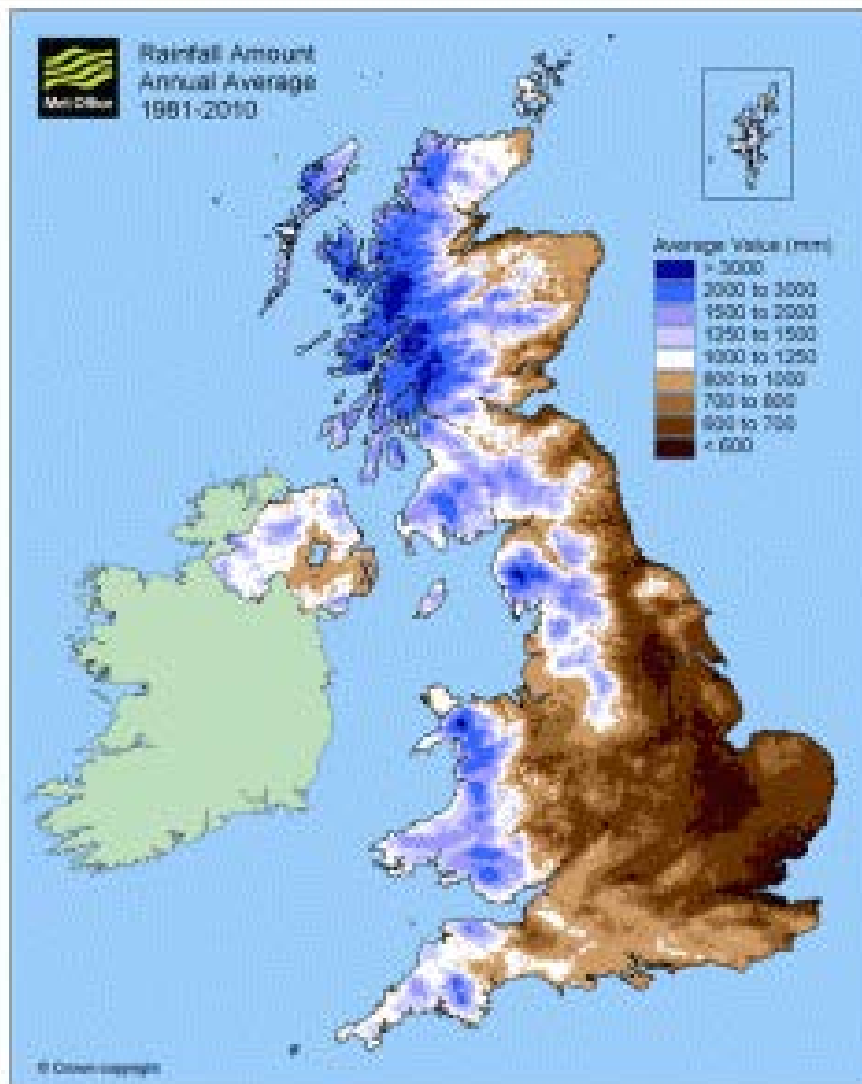
Maximum temperature, 1981-2010

Yearly average: 14.7 °C



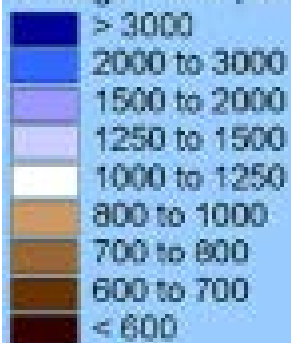
21.05.2020

Evolution



Map shows the 1981-2010 average annual UK rainfall based on individual station data –

Average Value (mm)



21.05.2020

Evolution

You Will Need

- Paper
- Pencil
- Scissors
- Colouring pencils, pens or paints
- Cardboard
- Tape
- Playdough
- Imagination

Your Task

Adapt a plant!

- Chose a plant the you know survives well in the UK – If you have a garden you might want to choose one from your garden
- Adapt your plant so that it can survive in a rain forest
- Create your own plant in whatever form you like
- Film yourself explaining how your plant has adapted from it UK species to a species that would survive in the rainforests of Peru – make this as informative as you can

21.05.2020

Evolution



Adapt you plant for another habitat:



Remember to take a photo of your amazing work and send it in to your teachers!